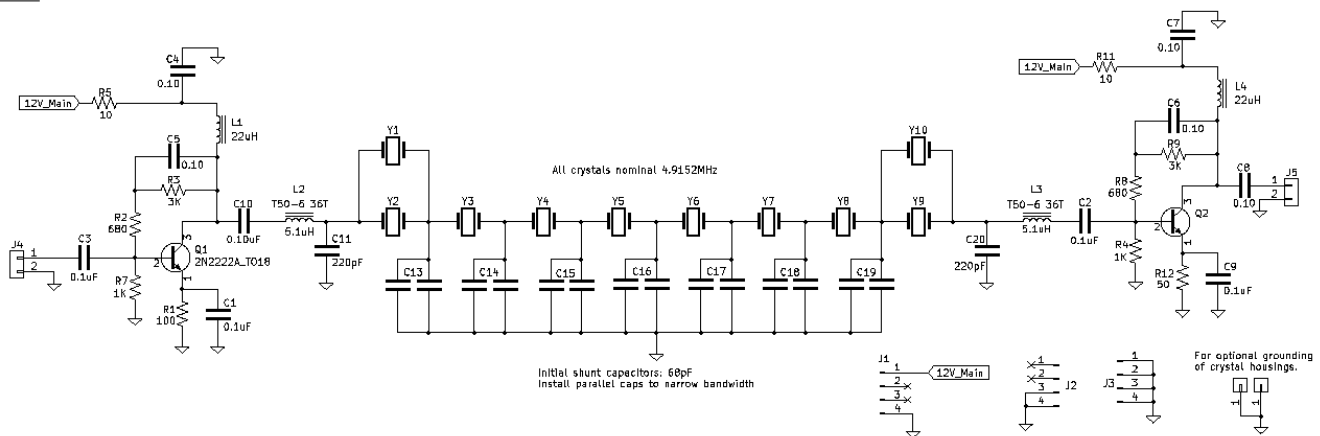


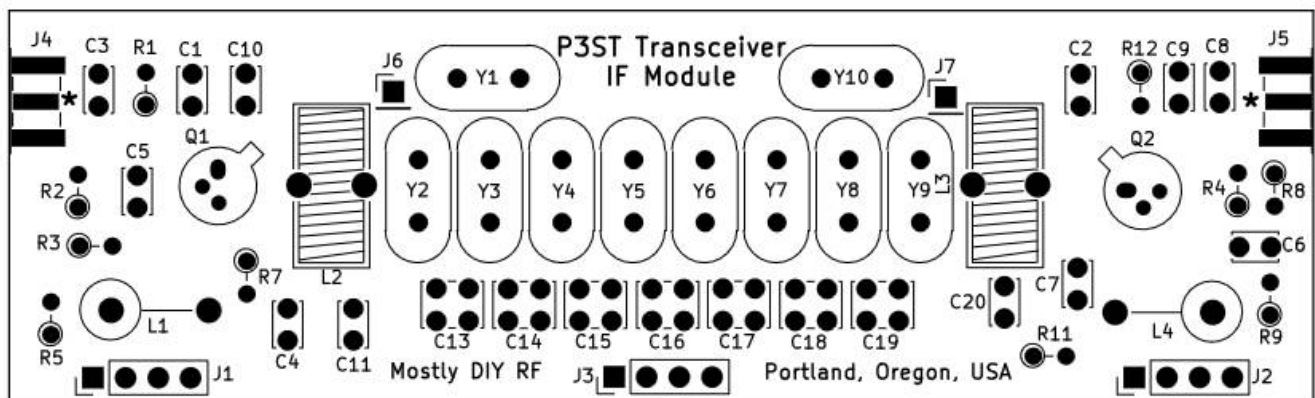
Mostly DIY RF / P3ST Transceiver Kit

IF Module

Some would say a crystal-based IF filter is the very heart and soul of a good SSB rig. There's no doubt that a clean, ripple-free and narrow-skirted "xtal" filter is essential for excellent performance, especially in a receiver. This one is an 8-pole QER (quasi-equiripple) type. The parallel crystals at each end minimize passband ripple in a properly-terminated filter. In part, this termination is provided by flanking amplifiers and by L-match networks (L2/C11 and L3/C20). In the P3ST, relays switch the IF module between transmit and receive modes.



Assembly Diagram



For more information on the assembly and testing of the IF module see the project documentation at:

<https://github.com/mostlydiyrf/p3st/tree/main/docs>