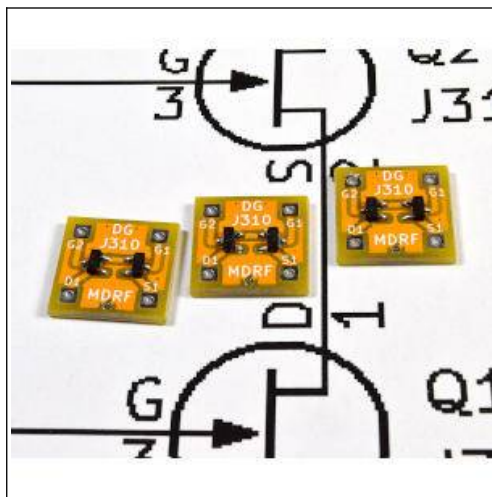
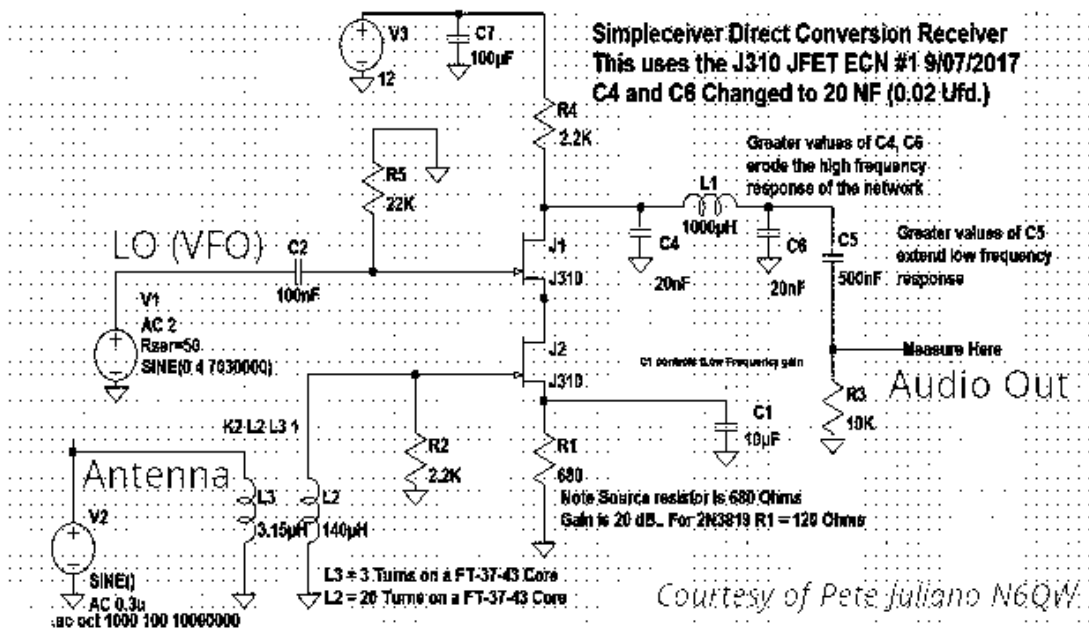


DGJ310 Dual-Gate J310 JFET

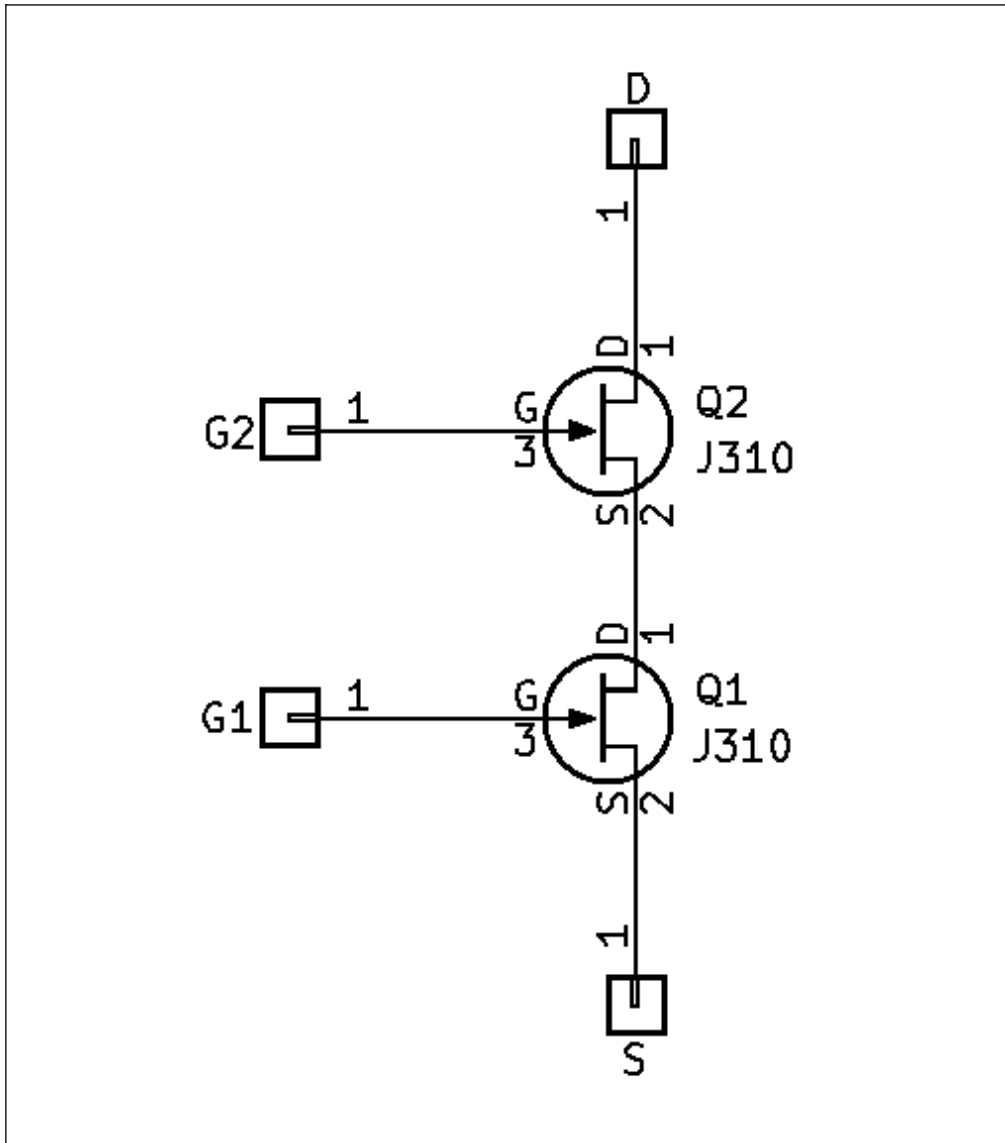


One could call this arrangement of J310 transistors a JFET tetrode. They are similar to dual-gate MOSFETs, but with the characteristics of a junction FET. Once widely used in their TO-92 through-hole versions, the J310 is now available only as a surface-mount device. Pete N6QW pioneered the use of the 310 in a dual-gate arrangement. These little half-inch breakout-boards might make experiments and home brewing with them a bit easier.

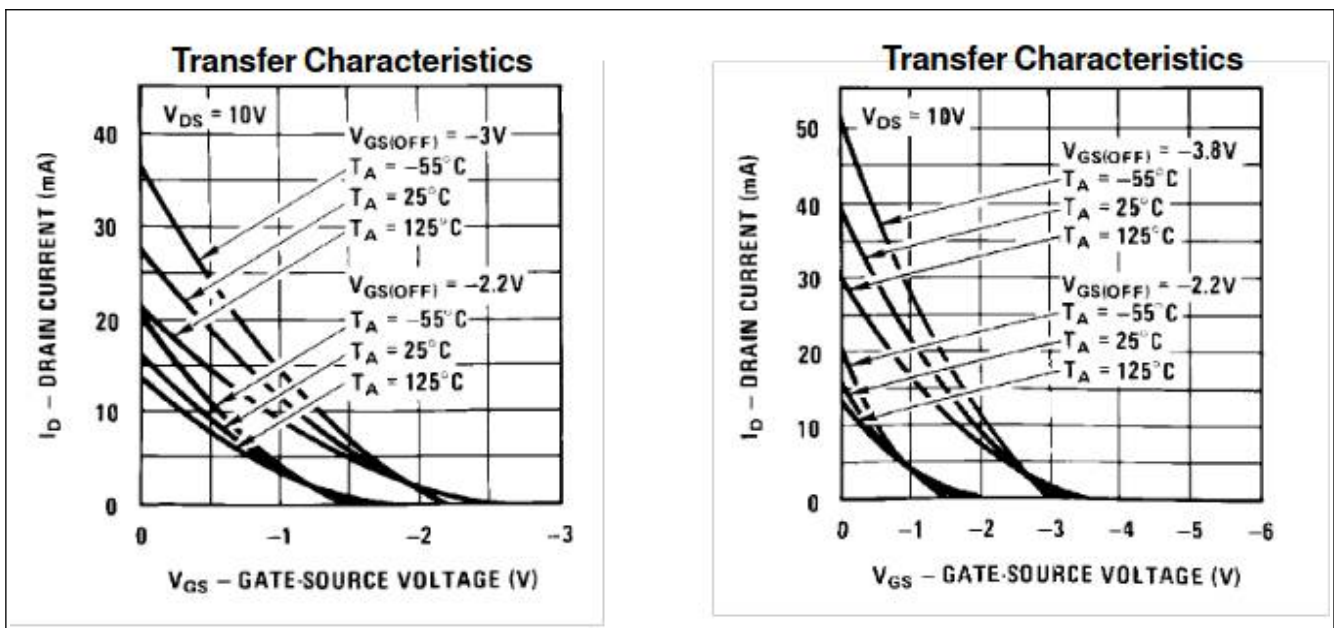


Courtesy of Pete Juliano N6QW

Example of use as a mixer



PCB schematic



J310 Characteristics